



## SHL lamps

Two ways interchangeable  
with sealed beam lamps

For rotorcraft, general aviation, business, commercial and military aircraft



**NOW AVAILABLE!**  
Increase Aircraft dispatch rate  
and reduce maintenance cost

PAR 36 (150 W), PAR 46 (300 W) and PAR 64 (450 W)

**Significant increase in reliability and lower power  
consumption vs standard sealed beam**

**Applications: Runway turn off, taxi, take off, landing,  
logo, wing and engine lights**





SHL lamps  
Two ways interchangeable  
with sealed beam lamps

SHL technology vs standard lamps:

Typical ROI within 14 months

	Standard lamps P/N	ECE P/N	Reliability improvement* (compare to standard lamp)
Par 36	4626	4394909	up to 3,4
Par 46	Q4554	4395087	up to 8
Par 64	Q4559X	4394916	up to 1,6

\* result of 6 months evaluation by major A320 operators

Significant improvement in reliability confirmed by airlines evaluation

With the SHL technology the light beam is more homogeneous: the visual comfort of the pilot is higher than with the use of standard sealed beam.

	Power consumption	
	Standard lamps	SHL
Par 36	150 W	150 W
Par 46	450 W	300 W
Par 64	600 W	450 W

Lower power consumption



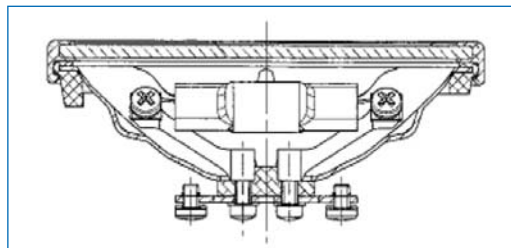
Taxi light with SHL

3 components vs 1 sealed beam

Increased reliability and reduced direct operating costs



Lamps are repairable, bulb replaceable (3 components)



- Bulb and lens are LRU
- Reduce maintenance cost
- Reduce stock parts



ECE

129 Boulevard Davout - B.P. 113  
75960 Paris Cedex 20 - France

Tel. : +33 1 56 06 10 00 - Fax : +33 1 56 06 10 10

information@ece.zodiac.com

S.A.S. au capital de 6.000.000 EUR - R.C.S. Paris B 775 694 995

www.ece.zodiac.com



IN-SERVICES

7, avenue du Parana - BP 303  
91958 Courtaboeuf Cedex France

Tel: +33 1 64 86 69 69 - Fax: +33 1 64 86 69 79

AOG line: +33 1 49 75 45 73

ISO 9001 : 2000 - AQAP2110 - AS/EN 9100:124919

www.in-services.com