



Dual-mode search / landing light

Visible (HID or halogen technology)
and IR (LED technology)

For military rotorcraft



Light weight and compact design
with high optical performances

ECE search/landing light experience:
more than 20 millions flight hours accumulated



ECE

References:
- Agusta EH101
- Boeing V22
- HAL ALH



Dual-mode search /
landing light
Visible and IR

Technical Data

- Photometrical intensity: 300,000 cd
- IR technology: LED
- IR photometrical intensity > 0,8 NRI
- Input voltage: 28 V DC
- Nominal power: up to 500 W
- Environmental conditions: DO160
- Extension: up to 120°
- Rotation: up to $\pm 180^\circ$
- Operational deployment: up to 180 knots



V22 search/landing light

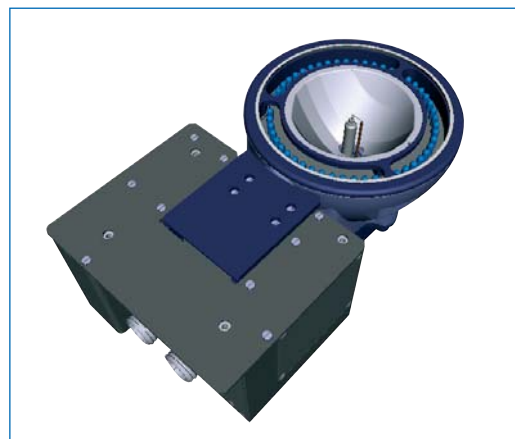
NEW !

Available also with HID technology!

Search/Landing light HID PAR 46 with IR LED

- Photometrical intensity: 300,000 cd
- IR technology: LED
- IR photometrical intensity > 0,8 NRI
- Input voltage: 28 V DC
- Nominal power: up to 65 W
- Environmental conditions: DO160
- Extension: up to 120°
- Rotation: up to $\pm 170^\circ$
- Operational deployment: up to 180 knots
- Weight < 3,7 kg

Electrical and mechanical interfaces easily adaptable to meet all customer requirements



Search/Landing light HID PAR 46
with IR LED



ECE

129 Boulevard Davout - B.P. 113 - 75960 Paris Cedex 20 - France - Tel. : +33 1 56 06 10 00 - Fax : +33 1 56 06 10 10

information@ece.zodiac.com - S.A.S. au capital de 6.000.000 EUR - R.C.S. Paris B 775 694 995

www.ece.zodiac.com